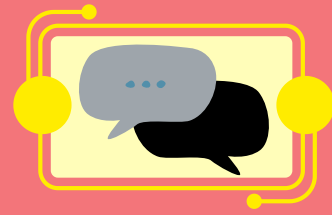


UNIT 6 English Safari2

Locations





Let's Talk

Unit 6

©Oomura & Surely Work, Inc.

Hi, May. This is Meg.
Where are you?



I'm at home.

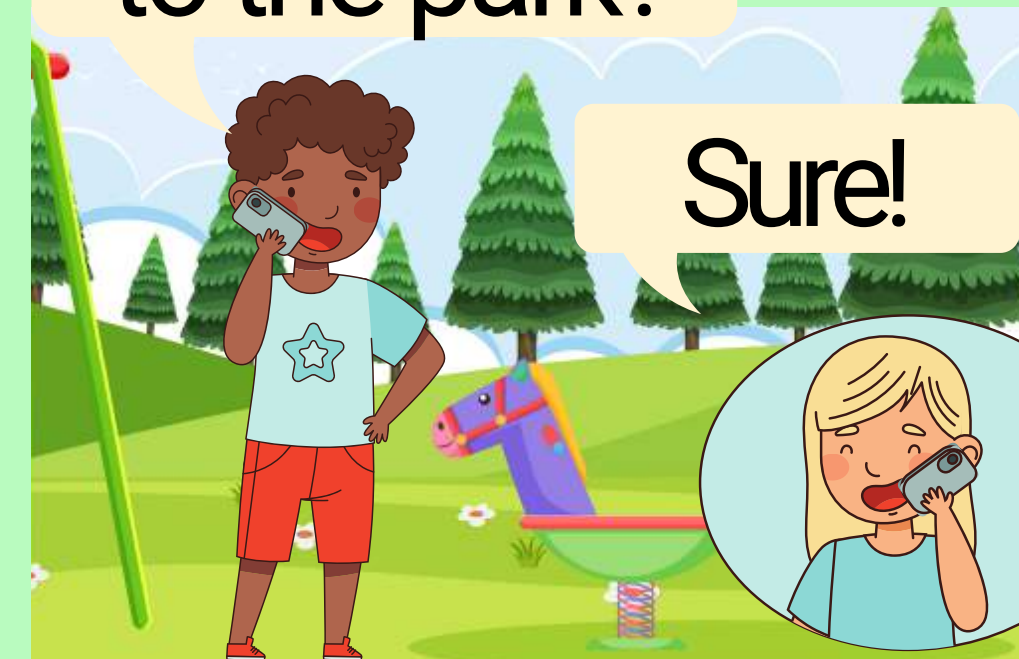


Where are
you?



I'm at the
park.

Can you come
to the park?



Sure!

A

Listen and say.

1. watch TV



2. study English



3. practice the piano.



4. talk on the phone



B

Read and do.

What do you do every afternoon?

I study English.



Let's Learn

Unit 6

©Oomura & Surely Work, Inc.

1



at home

2



at school

3



at the
library

4



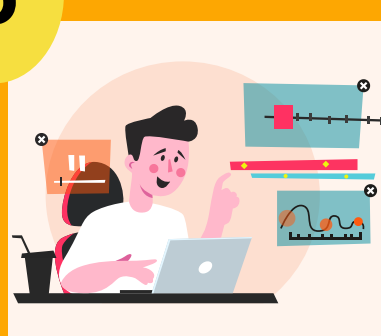
at the park

5



at the zoo

6



at work

Practice the sentences.

He's at school.
She's at school.

A

Words. Listen and repeat.

Where is he? He's at the park.
Where is she? She's at the park.

Unit 6

©Oomura & Surely Work, Inc.

B Practice Q and A.



Is / he / at home?
she /

Yes, / he / is.
she /

No, / he / isn't.
she /

1



2



3



C

Ask and answer.



Let's Learn more

Unit 6

©Oomura & Surely Work, Inc.

1



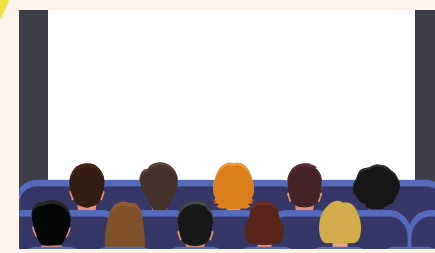
on the farm

2



in the
restaurant

3



at the movies

4



on the train

5



on the bus

6



at the store

Practice the sentences.

They're at the store.

A

WORDS. Listen and repeat.

Where are they? They're **in the taxi.**

Unit 6

©Oomura & Surely Work, Inc.



B

Practice Q and A.

Are they **at the park?**

Yes, they are. No, they aren't.

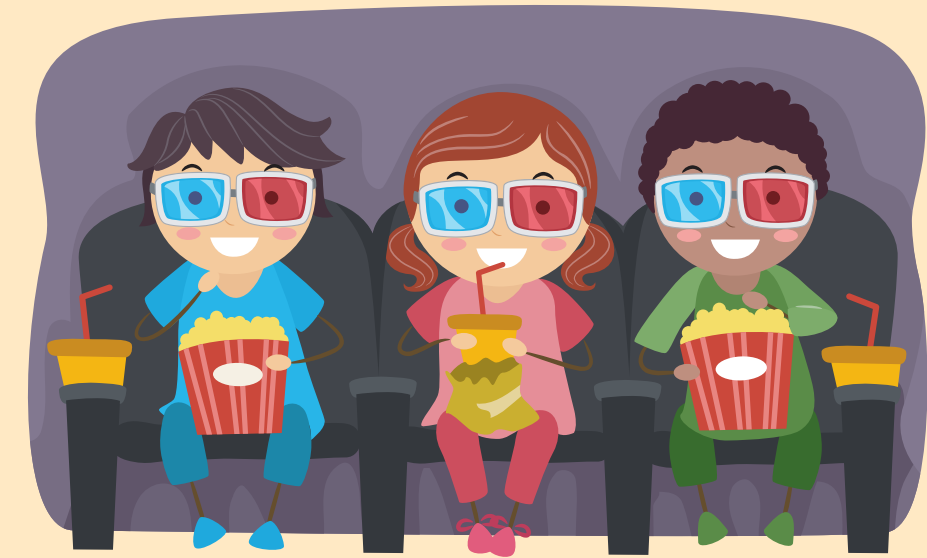
1



2



3



C

Ask and answer.



Let's Check

Unit 6

©Oomura & Surely Work, Inc.

SCHOOL

The students are at school.



A

Make sentences.



Let's Check

Unit 6

©Oomura & Surely Work, Inc.

A

Make sentences.



The students are on the bus.

Where's the **cook**? Where are the **cooks**?

He's **in the kitchen**. They're **in the kitchen**.

1



2



3



B

Ask and answer.